



CASA CAPACE

Introduction



PRESENTING TO:

Northcott Ballina & Coffs
Harbour

PRESENTED BY:

DPN Casa Capace

DATE:

September 2019

Create & operate beautifully designed homes for social impact



Casa (ca·sa): house, home.

Capace (ca·pà·ce): capacity, to be able, having the ability to achieve.

DPN Casa Capace is a standalone, social impact business, incubated within the DPN Group, sharing the same values and leveraging DPN's core capabilities to provide quality housing for Australians with disabilities.

Partnering with industry leaders, DPN Casa Capace will set a new benchmark in housing design, providing innovative and highly desirable homes for Australians with disabilities.

We will deliver a flexible, cost effective and scalable housing solution to meet the current and forecast unmet demand of the NDIS.





*Live the life you want*TM

OUR FOUNDATION DPN Group

- Founded 1996, team of 60+ people, DPN is an award-winning, professionally certified Property and Financial Services Enterprise.
- Helped many Australians build wealth by providing independent, researched-based property investment strategies, site selection assistance, construction oversight, property management, mortgage and financial services.
- DPN offers access to architecturally designed project homes, including its very own Casa range, which is the genesis of our Casa Capace homes.
- Our existing supply chain and management infrastructure delivers approximately 250+ dwellings per year.
- Our enterprise has achieved industry recognition across multiple facets of our business including finance, marketing and design.





Vision

“We shape our buildings, thereafter they shape us”

WINSTON CHURCHILL



OUR HOMES

Innovative design matched with quality living

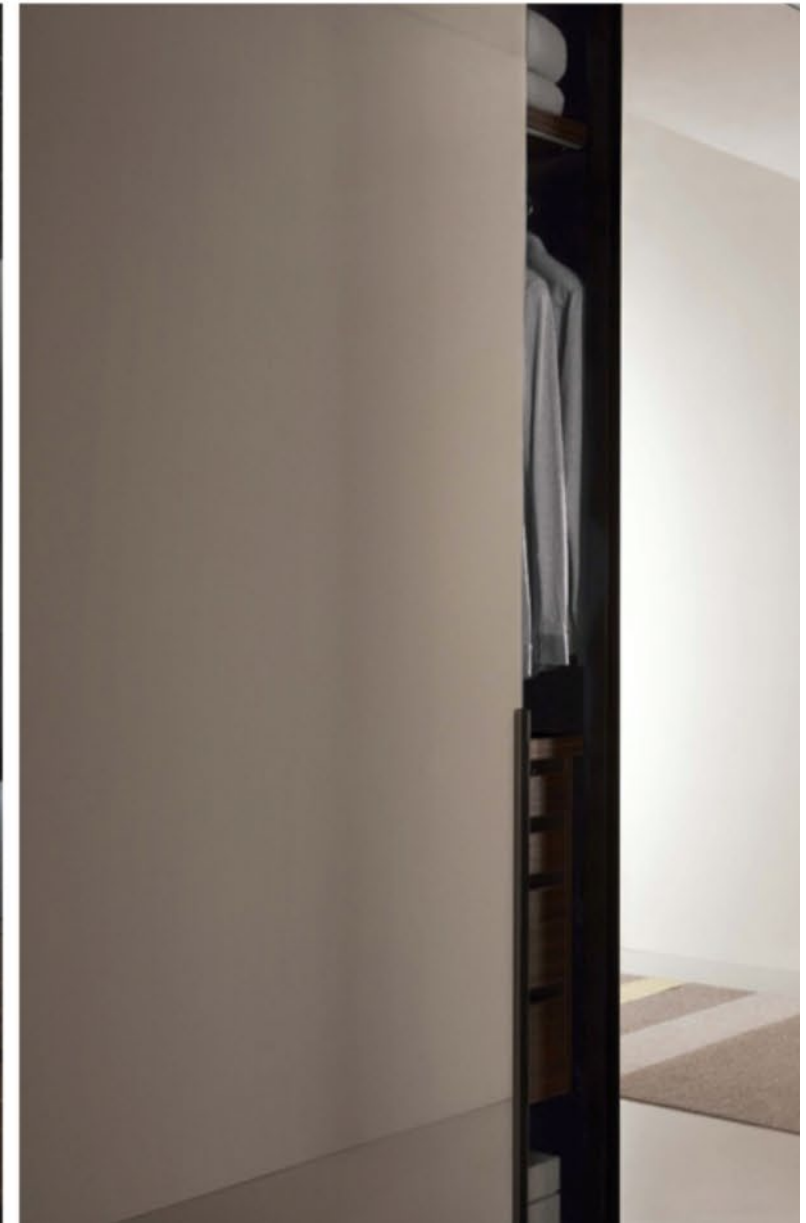
Designed by Architect Aaron Stevens and in collaboration with SIL providers, these homes will exceed the requirements of the NDIS and are built to a Platinum standard.

We will produce stylish homes featuring innovative, contemporary living spaces to give Australians with disabilities access to quality housing, with practical features to make living easy.



OUR HOMES

Beautiful living experiences for Australians with disabilities



OUR HOMES

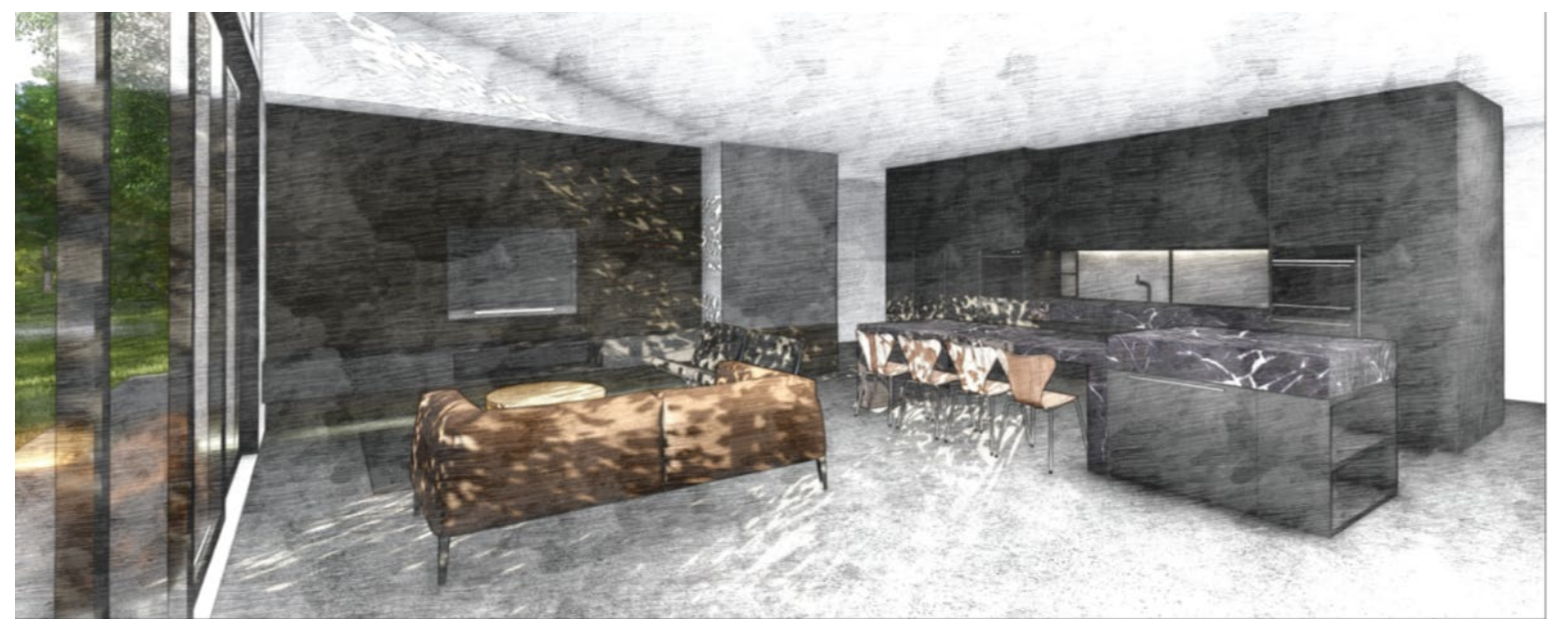
Beautiful living experiences for Australians with disabilities



MATERIAL BOARD - LUCE



MATERIAL BOARD - NERO



Innovative design matched with quality living

Casa Capace homes are pre-fitted with design features to be customised for specific requirements, such as supports in ceilings to accommodate the installation of hoists or technology controlled devices like remote lighting, blinds, climate control and doors.

Standard features include:

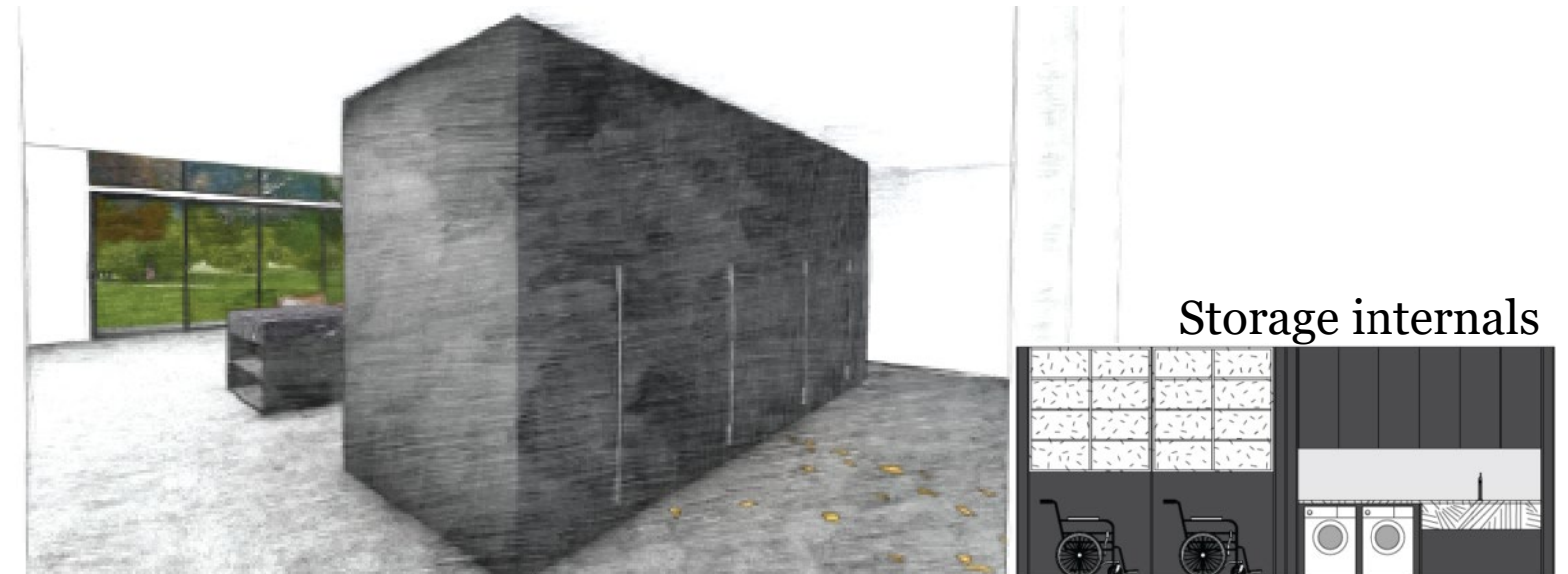
- Oversized doors and corridors
- Larger spaces to allow for mobility devices
- Open plan kitchens, dining and living areas
- Flush, single level living inside and out





OUR HOMES

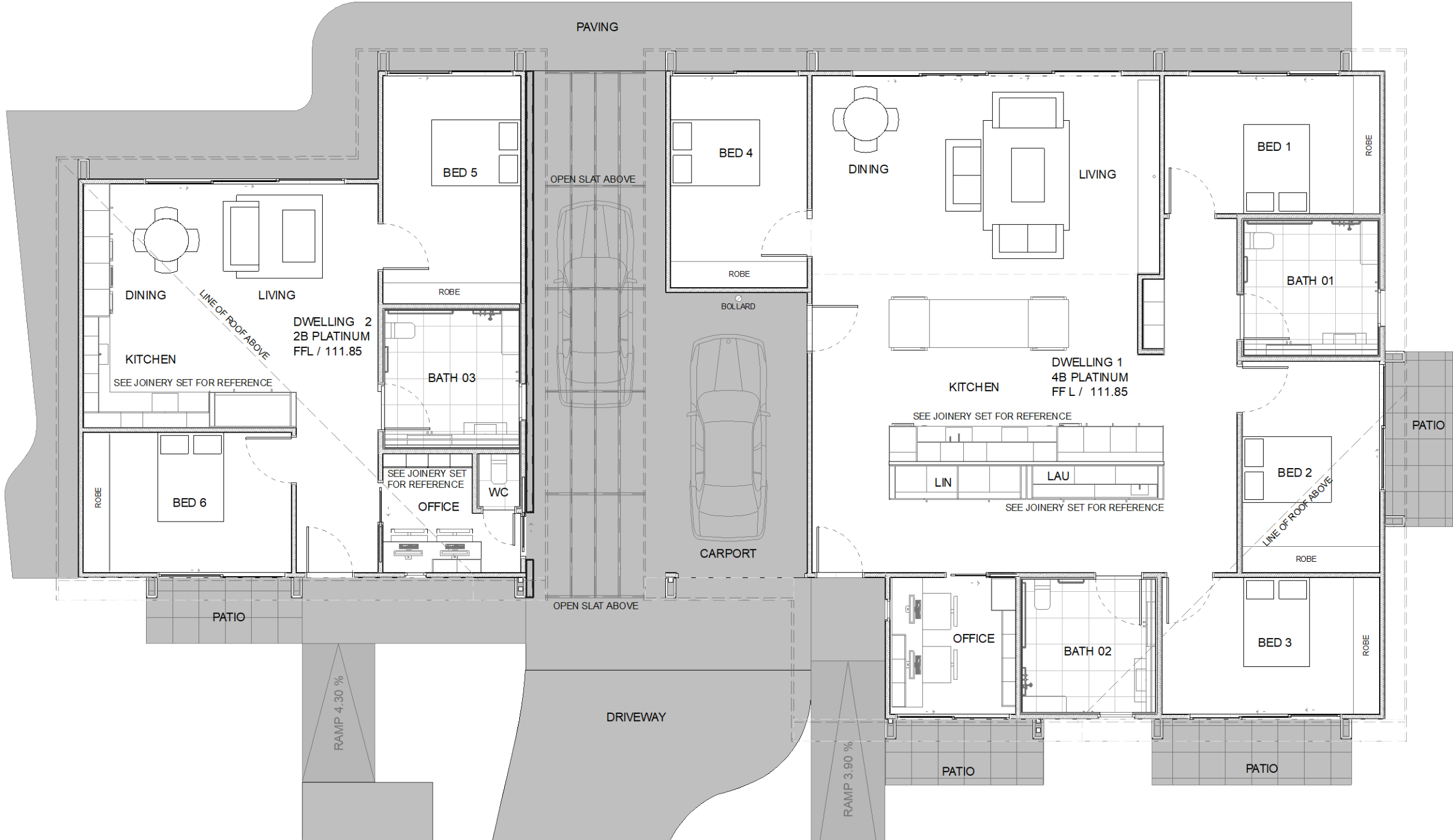
Beautiful living experiences for Australians with disabilities





OUR HOMES

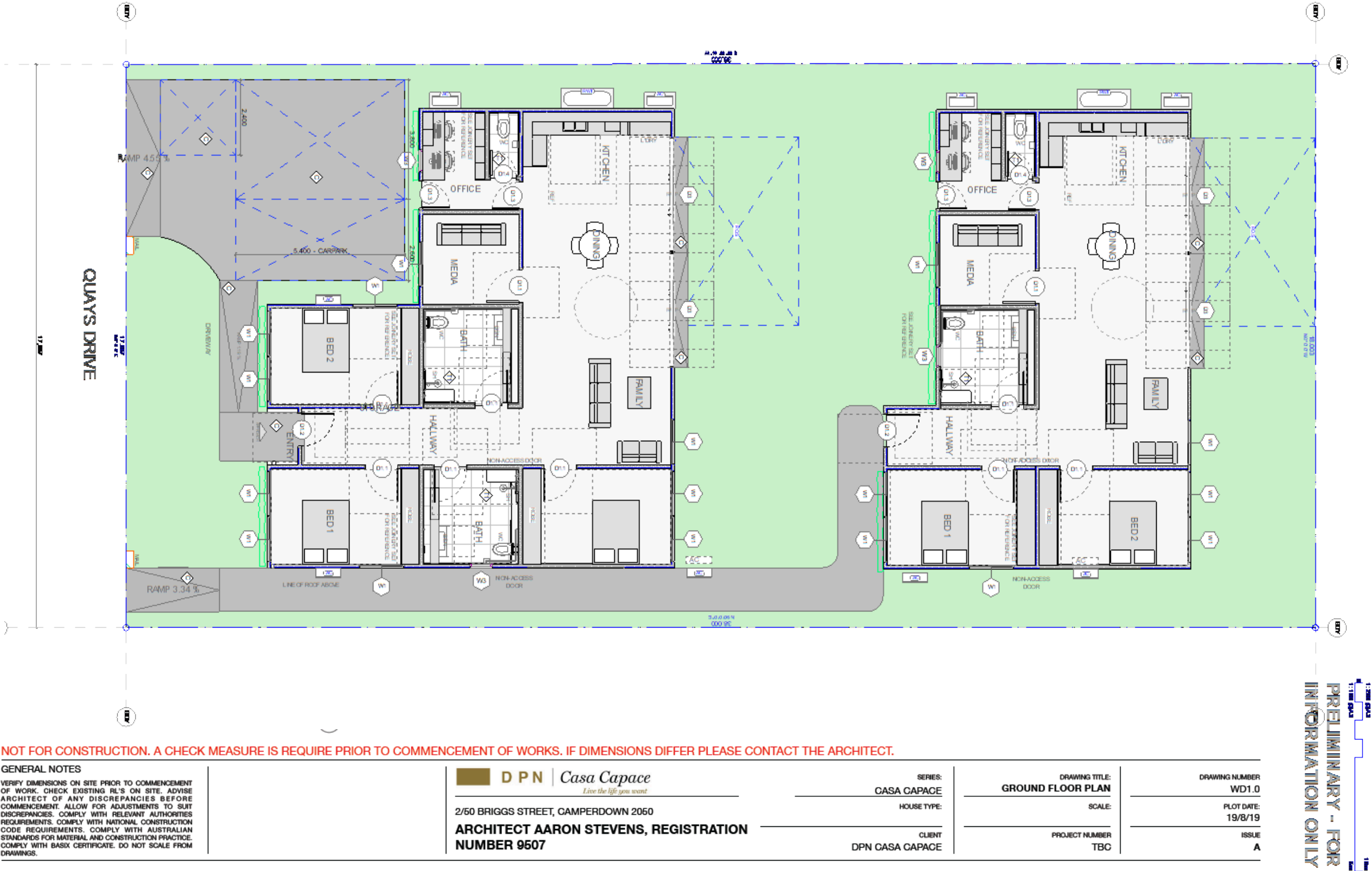
Pilot home floor plan





OUR HOMES

Indicative floor plan – 3+2



NOT FOR CONSTRUCTION. A CHECK MEASURE IS REQUIRE PRIOR TO COMMENCEMENT OF WORKS. IF DIMENSIONS DIFFER PLEASE CONTACT THE ARCHITECT.

GENERAL NOTES
VERIFY DIMENSIONS ON SITE PRIOR TO COMMENCEMENT OF WORK. CHECK EXISTING RL'S ON SITE. ADVISE ARCHITECT OF ANY DISCREPANCIES BEFORE COMMENCEMENT. ALLOW FOR ADJUSTMENTS TO SUIT DISCREPANCIES. COMPLY WITH RELEVANT AUTHORITIES REQUIREMENTS. COMPLY WITH NATIONAL CONSTRUCTION CODE REQUIREMENTS. COMPLY WITH AUSTRALIAN STANDARDS FOR MATERIAL AND CONSTRUCTION PRACTICE. COMPLY WITH BASIX CERTIFICATE. DO NOT SCALE FROM DRAWINGS.

DPN | *Casa Capace*
Live the life you want
2/50 BRIGGS STREET, CAMPERDOWN 2050
ARCHITECT AARON STEVENS, REGISTRATION NUMBER 9507

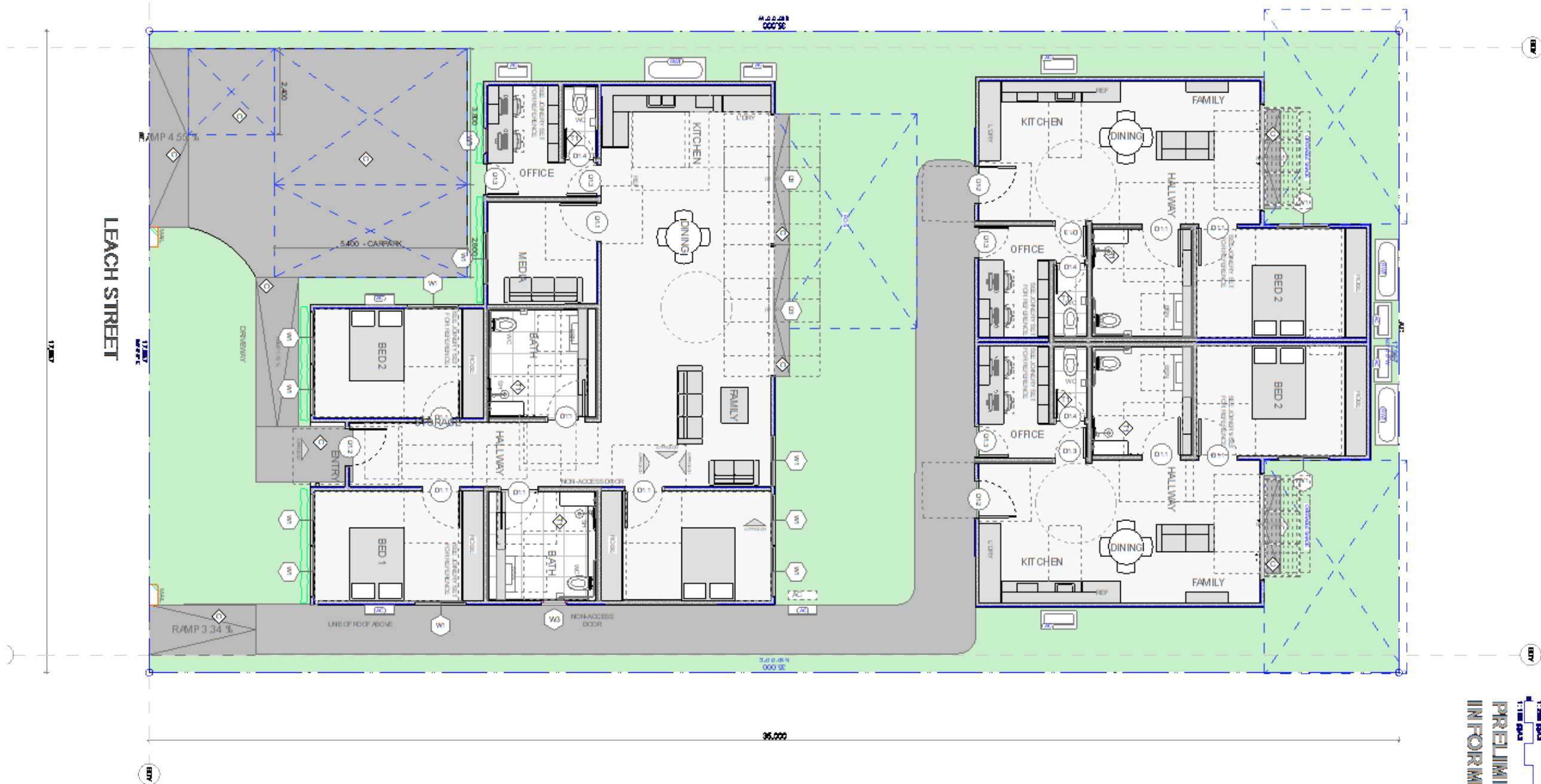
SERIES:
CASA CAPACE
HOUSE TYPE:
CLIENT
DPN CASA CAPACE

DRAWING TITLE:
GROUND FLOOR PLAN
SCALE:
PROJECT NUMBER
TBC

DRAWING NUMBER
WD1.0
PLOT DATE:
19/8/19
ISSUE
A

PRELIMINARY - FOR INFORMATION ONLY

Indicative floor plan – 3+1+1



NOT FOR CONSTRUCTION. A CHECK MEASURE IS REQUIRE PRIOR TO COMMENCEMENT OF WORKS. IF DIMENSIONS DIFFER PLEASE CONTACT THE ARCHITECT.

GENERAL NOTES
VERIFY DIMENSIONS ON SITE PRIOR TO COMMENCEMENT OF WORK. CHECK EXISTING RL'S ON SITE. ADVISE ARCHITECT OF ANY DISCREPANCIES BEFORE COMMENCEMENT. ALLOW FOR ADJUSTMENTS TO SUIT DISCREPANCIES. COMPLY WITH RELEVANT AUTHORITIES REQUIREMENTS. COMPLY WITH NATIONAL CONSTRUCTION CODE REQUIREMENTS. COMPLY WITH AUSTRALIAN STANDARDS FOR MATERIAL AND CONSTRUCTION PRACTICE. COMPLY WITH BASIX CERTIFICATE. DO NOT SCALE FROM DRAWINGS.

DPN Casa Capace
Live the life you want

2/60 BRIGGS STREET, CAMPERDOWN 2050
ARCHITECT AARON STEVENS, REGISTRATION NUMBER 9507

SERIES:
CASA CAPACE
HOUSE TYPE:
CLIENT
DPN CASA CAPACE

DRAWING TITLE:
GROUND FLOOR PLAN
SCALE:
PROJECT NUMBER
TBC

DRAWING NUMBER
WD1.0
PLOT DATE:
19/8/19
ISSUE
A

PRELIMINARY - FOR INFORMATION ONLY



PILOT HOME

Ground breaking



“We shape our buildings, thereafter they shape us”

WINSTON CHURCHILL

casacapace.com.au